



# Chugach

## VISITOR GUIDE



Visitor Centers.....page 3



Camping.....page 10



Wildlife.....page 12

# Contents

Visitor Centers .....	3
Capitol Christmas Tree .....	3
Eastern Kenai Peninsula.....	5
Prince William Sound .....	7
Copper River Delta.....	9
Camping.....	10
Backcountry Guide .....	11
Chugach Children's Forest...	11
Wildlife .....	12
Bears .....	13
Trail Guide .....	14
Partners .....	15

## THE CHUGACH

Forest Coordinators & Contributors:  
Annette Heckart and Mona Spargo

Produced and Designed by



Photos courtesy of the  
Chugach National Forest.

Printed on recycled paper  
using soy-based inks.

The *Chugach* Visitor Guide is published  
by the Alaska Geographic Association in  
cooperation with Chugach National Forest.

It is funded by revenue generated  
from Alaska Geographic bookstore sales.

©Alaska Geographic

USDA is an equal opportunity  
provider and employer.



Welcome to the Chugach National Forest, where distinctive cultures, customs, and ways of life converge. People have lived, worked, and visited the Chugach's 5.4 million acres for generations, and Alaska Natives have fished, hunted, and celebrated here since time immemorial. The most northerly forest in the national forest system, the Chugach contains three forests in one, ensuring our appeal to almost everyone.

- **The Kenai Peninsula** is a recreational playground for both visitors and residents. An hour drive from Anchorage, it is a quick trip to miles of hiking, biking, and skiing. Wildlife viewing and Alaska's most popular sport fishing area are also big draws to this region.
- **Prince William Sound's** icy waters beckon to boaters of all types. Whether you're kayaking, taking a spin on a motorboat, or venturing out on a chartered cruise, you are sure to enjoy the wide-open scenery, marine wildlife, tidewater glaciers, and the serenity of the water.
- **The Copper River Delta** is the largest contiguous wetlands complex on North America's Pacific Coast and is renowned for vast wetland habitats, mountains, and glaciers. It is the place for bird watching! Each spring millions of shorebirds use this area as a rest stop or nesting ground as they make their way north or south.

As the Chugach landscape evolves, it remains remarkably resilient. We continue to collaborate with university and agency partners to understand how climate change may affect lands in and around the Chugach National Forest. We invite the public to continue to share their experiences, interests, and ideas with us so we can continue to learn more about this important place.

Each year thousands of Alaskan youth are connected to their unrivaled public lands through stewardship and educational programs within the Chugach Children's Forest, a partnership between Alaska Geographic and the Chugach National Forest and supported by over 30 community partners. These programs allow us to engage the next generations of forest stewards.

This year the Chugach National Forest has the honor of supplying the 2015 Capitol Christmas Tree that will stand tall in front of the U.S. Capitol during the holiday season. This is an exciting opportunity to share a piece of the rich landscape that Alaskans enjoy every day with the nation and highlight the Chugach National Forest as a dream destination for thousands of visitors each year, as well as a vital, living home and workplace for many Alaskans.

I encourage you to get outside and enjoy the opportunities available in the Chugach. Be safe and make sure you are prepared for the elements and dangers inherent to your chosen activity. This guide provides an excellent foundation from which to start your journey! Enjoy, respect, and be a steward of your national forest.

Terri Marceron  
Forest Supervisor

# Begich, Boggs Visitor Center

The Begich, Boggs Visitor Center is a world-class facility with interactive exhibits, the Portage Valley Learning Center, the Alaska Geographic bookstore, and a 200-seat theater that shows the film *Retreat and Renewal*. Knowledgeable Forest Service interpreters provide programs on the natural and cultural wonders of Portage Valley, including the popular ice worm hunt to Byron Glacier. During your visit, be sure to take a spin on the MV *Ptarmigan* for a view of Portage Glacier at the other end of Portage Lake.



## Hours

9 am to 6 pm daily

### Summer

(Closed in winter)

## Activities

Information, award-winning film, exhibits, ranger-led programs and guided hikes, and Alaska Geographic bookstore.

## Fees

\$5.00 for adults, children 15 and younger are free! Fee includes admission to movie and exhibits.

## Contact us

Begich, Boggs Visitor Center  
800 Portage Lake Loop  
Portage Valley, AK 99587  
(907) 783-2326

# Crooked Creek Information Site

The Crooked Creek Information Site near Valdez perches between Prince William Sound and the forested mainland. The site is open from Memorial Day to Labor Day and is a popular place to watch wildlife and spawning salmon.



## Hours

9 am to 6 pm daily

### Summer

(Closed in winter)

## Activities

Information, viewing platform, exhibits, ranger-led programs, and Alaska Geographic bookstore.

## Contact us

Crooked Creek Information Site  
Mile 0.5 Richardson Highway  
Valdez, AK 99686  
(907) 835-4680

# 2015 Capitol Christmas Tree

Chugach National Forest will provide the 2015 U.S. Capitol Christmas Tree. For the past 50 years, the House of Representatives has celebrated the arrival of the holiday season with an official tree, also known as the “People’s Tree.” Since 1970, the tree has been presented by the country’s national forests in partnership with their home state, local communities, and partners.

For the Chugach National Forest and our participating partners, the opportunity to provide the tree is a chance to show the nation how the Alaska landscape sustains and inspires people. The tree symbolizes Alaskans and their strong relationship to their state, their community, to each other, and to the land. Alaskans rely on the Chugach National Forest and other lands for food, livelihoods, and inspiration. The U.S. Capitol Christmas Tree is about fostering and promoting our connections within Alaska and across the nation. We invite you to join one of the many celebrations that take place throughout the year and discover Chugach National Forest and Alaska communities and people.



For more information on the U.S. Capitol Christmas Tree, check out [www.capitolchristmastree.com](http://www.capitolchristmastree.com)





# Eastern Kenai Peninsula

The Eastern Kenai Peninsula in the Chugach National Forest is best known for its spectacular recreational opportunities. Its forested lands, mountains, and rivers are just minutes south of Anchorage, the largest city in Alaska. The peninsula is a haven for visitors and residents alike. A hiker's paradise, it boasts hundreds of miles of maintained trails. For the fisherman, numerous opportunities exist to reel in "the big one." So head south to experience one of the forest's most accessible treasures.

## Camping

Numerous camping opportunities exist along the Seward Highway, a nationally designated All-American Road and National Scenic Byway. Trail River Campground, south of Moose Pass, is located strategically between Seward and Cooper Landing for visitors who want to access recreational opportunities in both areas. The campground can accommodate modern recreational vehicles and has a day use area along the scenic shore of Kenai Lake. A large group site, available by reservation, has a volleyball area, horseshoe area, covered pavilion with fire grates, and playground equipment. Nearby are Ptarmigan Creek Trail, Victor Creek Trail, and Carter Lake Trail that access the spectacular backcountry and offer fishing opportunities in both lakes and streams.

## Johnson Pass Trail

Originally part of the historic Iditarod Trail, Johnson Pass Trail offers 23 miles of spectacular scenery. The trail is forested for the first four miles and then opens up to beautiful subalpine meadows and wildflowers; the last 10 miles of the trail descend back into forest. Elevation gain is fairly gradual with a few steep grades. Pack a fishing rod and try your hand at catching some arctic grayling or rainbow trout in Bench or Johnson lakes. This trail is very popular with mountain bikers, so stay alert and expect some wheeled traffic, especially if you are hiking on a weekend.

## Resurrection Pass Trail

At nearly 40 miles long, the Resurrection Pass Trail is one of the Eastern Kenai's most popular trails. It has been designated as a National Recreation Trail. This status recognizes the trail as an important connection between people, local resources, and quality of life. Eight rental cabins lie along the trail. While they are primitive—with no electricity or running water—they are mighty inviting on a multiple-day hike. Book early because they are very popular. If the cabins are booked, you can still camp in one of the many campsites along the trail. (See page 10 for cabin information.)

If 40 miles is just not enough hiking, you can combine this trail with the Russian Lakes Trail (for a nearly 60-mile hike). Don't worry, if you are only looking for a short hike there are plenty of spots on the trail that you can hike to and back out in a day.



**Don't Miss...**

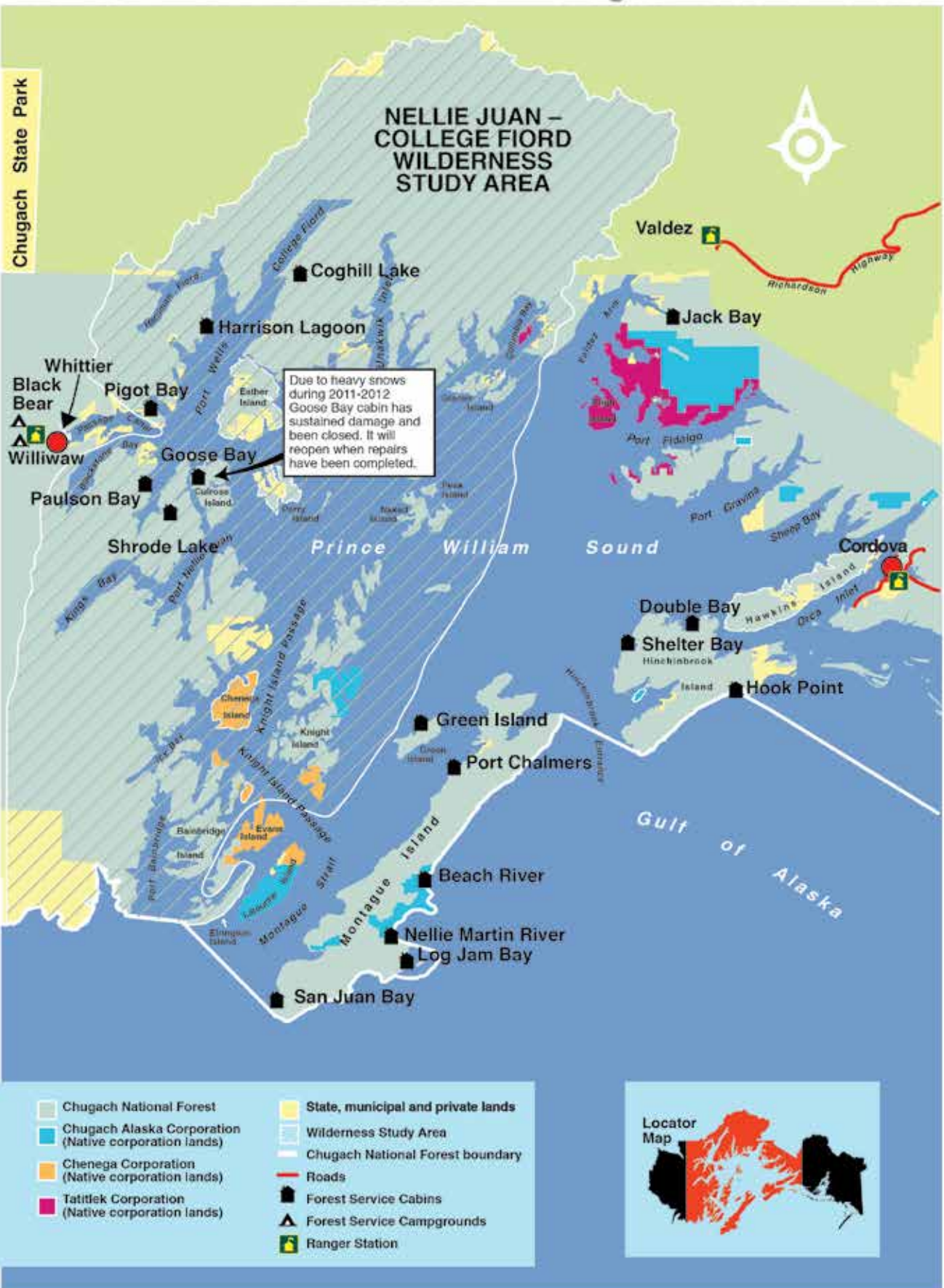


### **Iditarod National Historic Trail—Southern Trek**

The Chugach National Forest is restoring and developing more than 180 miles of the Southern Trek of the Iditarod National Historic Trail, connecting the communities of Seward and Girdwood. The trail represents a national heritage, recreation, and education resource that inspires and draws Iditarod enthusiasts, history buffs, students, and outdoor adventurers from around the world. Located less than an hour from Anchorage, the Southern Trek provides year-round opportunities to experience the spirit of the historic Iditarod.



# PRINCE WILLIAM SOUND - Chugach National Forest



# Prince William Sound

The forest meets the sea in Prince William Sound, where lush rainforest borders 3,500 miles of intricate coastline. Glaciers are a prime attraction in Prince William Sound with hundreds of glaciers spilling from high peaks, some flowing all the way to the ocean and calving into remote fiords. The ice is retreating in many areas, providing a glimpse of unique geology and post-glacial reforestation.

## Keeping it Wild

In 1980, Congress designated roughly two million acres along western Prince William Sound as the Nellie Juan-College Fiord Wilderness Study Area (WSA). This recognized the area's exceptional beauty and remoteness and its possible future designation as federal wilderness. Until Congress determines the next step, the Forest Service is committed to preserving the area's wilderness character to provide the public outstanding opportunities for solitude, primitive recreation, and inspiration in an undeveloped setting. Fishing, hunting, hiking, kayaking, skiing, camping, birding, and many other non-motorized activities are encouraged, while roads, development, and motorized use is generally prohibited. The WSA only pertains to Chugach National Forest lands and does not affect motorized or other uses on marine waters.

## Recreating in the Sound

Unplug from daily life! Enjoy kayaking, boating, glacier and marine life viewing, and ample wilderness. Established trails are few but the hiking is beautiful and short treks reach alpine areas and great views. For overnight stays, spend days exploring the alpine slopes, berry-picking, fishing, hunting, or skiing in winter, and evenings at a beach campsite. Always practice Leave No Trace principles and note restrictions in the wilderness study areas such as no chainsaw use.

Permits are not required for general camping and all campsites are primitive. Contain camping activities to beach gravel surfaces and clean up bits of garbage, dismantle fire rings, and replace moved rocks or materials. Four campsites in Blackstone Bay and Culross Passage provide durable gravel camping surfaces. Bear cans and portable toilets are loaned free at the Glacier Ranger District. For details visit Begich, Boggs Visitor Center in Portage Valley, Glacier Ranger Station in Girdwood, or Crooked Creek Information Site in Valdez.

## Sightseeing

If you don't have a lot of time, a day cruise or flightseeing trip is an excellent way to see Prince William Sound. Catch a boat from Whittier or Valdez. Cruises range from four hours to several days and you can tailor the trip to meet your schedule. Flightseeing allows for a birds-eye view of the sound—flying over 15,000 square miles of fiords, inlets, glaciers, and mountain peaks. Both choices allow for great wildlife viewing and sightseeing.



## Don't Miss...

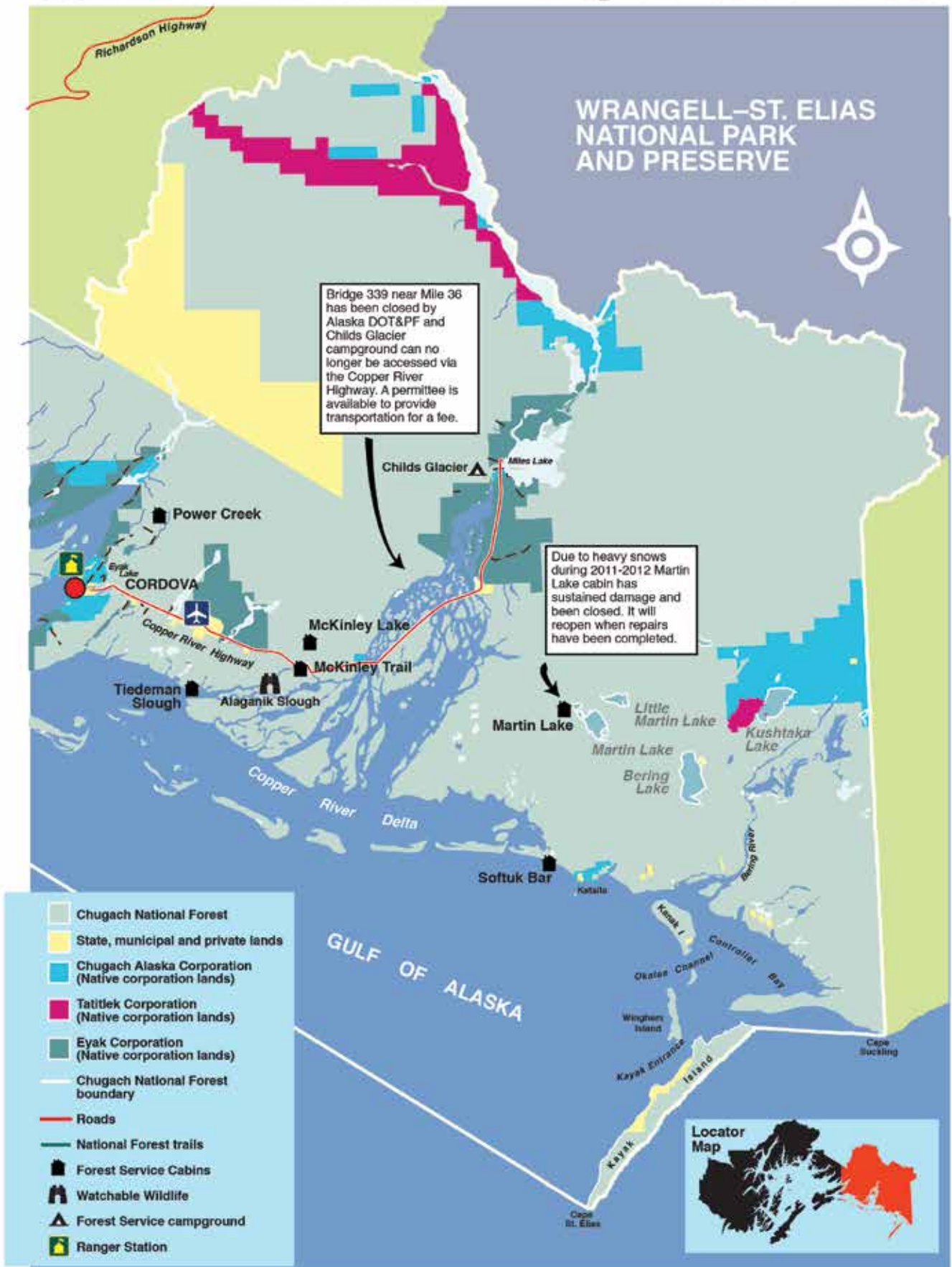
### A Kayak Trip in Prince William Sound

Experience profound silence and calm as you ply the waters of Prince William Sound. Kayaking is a wonderful way to be out on the water and explore busy bird rookeries, sealife, and breathtaking scenery. Plan a multiple-day trip to access remote campsites and cabins around the sound. Cabins can be reserved 180 days in advance.

Be prepared! Help can be hours away. Review tide, bear, and water safety information before heading out, as communications may be non-existent. If you are not comfortable heading out on your own, check out local tour operators that can provide guided kayak adventures in the sound.



# COPPER RIVER DELTA - Chugach National Forest





# Copper River Delta

The 700,000 acre Copper River Delta, the largest contiguous wetlands along the Pacific coast of North America, is named for its abundant copper deposits. It's woven from six glacial river systems and renowned for its vast wetland habitats, mountains, and glaciers—with Miles and Childs Glaciers calving directly into the river. Unconnected by roads, you must take a boat, ferry, or plane to Cordova to access the area.

It is obvious the delta is managed for the conservation of fish and wildlife and their habitats. Bear, moose, bald eagles, and mountain goats are frequently sighted, making wildlife viewing very popular. More than two million salmon spawn in the river each year traveling almost 300 miles to return to spawning grounds. The high concentrations of omega-3 fatty acids the fish require for the journey make them a favorite of cooks and chefs the world over.

## Birding

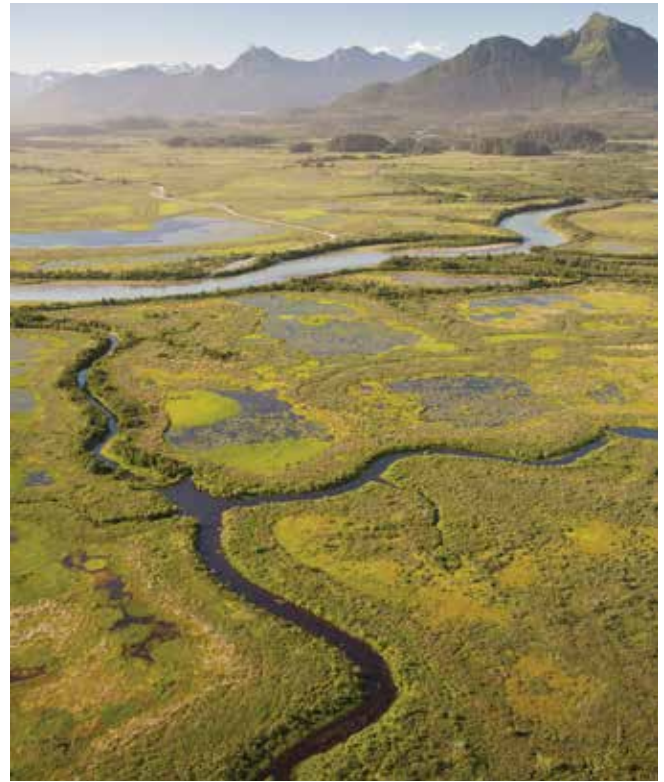
The delta is for the birds—literally. Swans, geese, ducks, shorebirds, and bald eagles are all temporary or permanent inhabitants of the area. Birds flock here to take advantage of lands set aside as nesting grounds and as a refueling and resting stop on their way through the North American flyway. The delta is an integral part of the Western Hemisphere Shorebird Reserve Network, which brings together organizations to recognize and protect critical shorebird habitat.

## Alaganik Slough

Alaganik Slough is a unique wildflower viewing area situated on the expansive Copper River Delta. The three-mile road accessing Alaganik Slough from the Copper River Highway winds through species-rich wetlands and ponds. At the end of the road you will find a developed site with a wheel chair accessible 900-foot-long boardwalk that parallels the slough. This area supports both aquatic and terrestrial plants. The wetlands here are dominated by a variety of sedges, grasses, and forbs bordered by shrub communities dominated by sweet gale. Willows, alder, and ponds dot the landscape and pockets of Sitka spruce harbor common terrestrial species of the area. The best time to catch wildflowers in bloom is from June to July along the boardwalk and road.

## Cabins

Scattered around eastern Prince William Sound and the Copper River Delta are 16 cabins where you can get away from it all. Take a short flight from Cordova and find yourself nestled on the beach in one of our beautiful cabins. The cabins do not have electricity or running water, but if roughing it doesn't bother you, check them out. Try your hand at beachcombing for glass balls, wild berry picking, digging razor clams, or fishing.



## Don't Miss...

### Copper River Delta Shorebird Festival

The most inviting small town in Alaska just may be Cordova, a fishing community and birder's paradise. Each year during the first weekend in May, the community welcomes millions of shorebirds to the Copper River Delta. Community events, workshops, and educational opportunities are offered throughout the week. Travel to Cordova from Anchorage by air or if you have time for a more leisurely trip, the ferry leaves from Whittier, 60 miles southeast of Anchorage, and crosses scenic Prince William Sound ([www.dot.state.ak.us/amhs](http://www.dot.state.ak.us/amhs)). More information is available from the Cordova Chamber of Commerce ([www.cordovachamber.com](http://www.cordovachamber.com))

# Camping in the Chugach

## Cabins

There are 38 primitive (no electricity or running water) cabins located throughout the Chugach National Forest.



**COST:** \$25-\$45 a night.

**STAY LIMIT:** 3-7 nights summer; 7 nights winter.

**GET THERE:** Hike, paddle, charter a plane or boat.

**HEAT:** Woodstove and/or oil stove. Check before you go: A few cabins have no stove and others require you to bring your own fuel.

**BRING:** Sleeping bags and pads, cook stove and gear, first aid, water, food, insect repellent, extra food, and clothing.

**EMERGENCY:** No phones, no radios, and cell phone coverage is not guaranteed. Be prepared.

## CAMPGROUND REGULATIONS

**STORE** all foods, beverages, garbage, pet food, cooking or food storage equipment in a vehicle, food locker, or camper.

**FIRES** are allowed only in established grates. Cutting live vegetation or standing deadwood is prohibited.

**PETS** must be on a leash at all times. Please dispose of feces in garbage cans. Secure pet food inside a vehicle.

**DO NOT FEED** any wild animal, even birds.

## Reservations

For cabins and campground reservations call (877) 444-6777 or visit [www.recreation.gov](http://www.recreation.gov)

Nightly camping fees range from free for remote sites to \$30 depending on campground, and \$150 for a large group site.

Campgrounds on the Kenai Peninsula and the Portage/Turnagain Pass area are operated by Alaska Recreation Management under permit from the Forest Service. Childs Glacier Campground is operated by the Forest Service.

## Campgrounds

Campgrounds are generally open from mid-May through September. The stay limit is 14 days except for the Russian River Campground, which has a 3-day limit from June 10 through August 20. Most campgrounds have a few sites for large RVs. Quartz Creek and Williwaw are able to handle 60-foot RVs. Backcountry camping is permitted but is limited to 14 days in one area.

Campground Location	# Sites
---------------------	---------

### KENAI PENINSULA

Cooper Creek	26
Crescent Creek	9
Porcupine	34
Primrose	7
Ptarmigan Creek	16
Quartz Creek	45
Russian River	84
Tenderfoot Creek	35
Trail River	91

### PORTAGE/TURNAGAIN PASS

Bertha	12
Black Bear	12
Granite Creek	19
Williwaw	60

### COPPER RIVER DELTA

Childs Glacier campground cannot be accessed via the Copper River Highway due to a bridge closure. Contact the Cordova Chamber of Commerce for a list of companies that provide access to the area.



# Backcountry Guide

**BE PREPARED:** Carry extra food, water, insect repellent, a map, compass, a pocketknife, waterproof matches, and emergency supplies.

**DON'T** take scented, spiced or smoked foods with you as they attract bears. And don't drink untreated water—*Giardia* occurs in the forest. Boil all water or use a filter.

**PACK OUT:** Toilet paper, used pads, tampons, and garbage.

**PLAN AHEAD:** Always let someone know where you are going and when you expect to return. Have a backup plan and a flexible schedule.

**TAKE A FRIEND:** Traveling alone increases your risk dramatically. Traveling in groups is recommended.

**DRESS PROPERLY:** Leave your cotton at home; synthetic pile or wool are best. Rain gear is a necessity. Bring a hat and gloves—even in the summer.

**STAY BACK:** Icebergs are unstable and can roll over at any time. Stay away from the face of tidewater glaciers to avoid large, unexpected waves caused by falling ice.

## FIRE SAFETY

- Build campfires away from overhanging branches, steep slopes, rotten stumps, dry grass, or leaves
- Pile extra firewood away from the fire
- Keep plenty of water on hand
- Have a shovel handy for shoveling dirt on an out of control fire
- Keep your campfire small
- Be sure any matches you use are out; break them into pieces
- Never leave a campfire unattended
- Extinguish fires completely
- Never bury a fire as the fire will continue to smolder and could catch roots on fire that will eventually get to the surface and start a wildfire
- If you see a fire burning out of control call 911

For more trail and camping information visit [www.fs.usda.gov/chugach](http://www.fs.usda.gov/chugach)

# Chugach Children's Forest



The Chugach Children's Forest is a partnership led by Alaska Geographic and the U.S. Forest Service and supported by over 30 community partners. Each year thousands of diverse youth, educators, and communities from across Alaska are connected to the Chugach National Forest and neighboring public lands through remarkable place-based learning opportunities and life-changing expeditions. These programs allow us to engage the next generations of forest stewards and close the growing disconnect between people—particularly young people—and the natural world around them. This initiative is dedicated to promoting healthy outdoor activities, creating pathways to outdoor-oriented education and careers, expanding public lands stewardship, and increasing climate change understanding while seeking local solutions in sustainability and promoting civic engagement. The Chugach Children's Forest provides:

### Life-changing expeditions and educational experiences

- Annual expeditions to Alaska's wildest places (i.e. Prince William Sound & Copper River Delta)
- Engage youth in stewardship projects
- Connect youth with their public lands

### Career and internship opportunities

- Prepare youth for unique careers in public land stewardship

### Volunteer and service learning projects

- Connect youth with public land agencies, school districts, non-profits, and businesses

### For teachers, the opportunity to connect

- Resource for place-based learning opportunities
- Unique training opportunities (iTREC – Iditarod Trail to Every Classroom)

Check out stories, photos, and more at [www.ChugachChildrensForest.org](http://www.ChugachChildrensForest.org).

# Watchable Wildlife

## EASTERN KENAI

### Tern Lake

Located at mile 37 of the Seward Highway at its intersection with the Sterling Highway. This area hosts a myriad of animals, birds, fish, and unique plants. Common loons, bald eagles, and arctic terns share the area with a variety of songbirds and shorebirds like the northern water thrush, golden-crowned sparrow, and the greater yellowlegs. Beavers, river otters, muskrats, and salmon ply the cold, clear waters of Tern Lake. Moose, Dall sheep, and mountain goats can be seen on the surrounding mountains. Best viewing seasons: spring, summer, and fall.

### Moose Flats Day-Use Site

Located at mile 1 on the Portage Highway. This site has a short boardwalk trail along several ponds. It is a good site for observing waterfowl that nest and rear their young in the ponds and river channels. Moose are also frequent visitors to the area and the boardwalk makes a nice observation post. Best viewing seasons: spring, summer, and fall.

### Williwaw Fish Viewing Platform

Located at mile 4 of the Portage Highway. Spawning sockeye, chum, and coho salmon arrive in late July and remain throughout early fall. In addition to salmon, visitors may see a variety of local songbirds, bald eagles, and black and brown bears. Best viewing seasons: spring, summer, and fall.

## PRINCE WILLIAM SOUND

### Crooked Creek Information Site

Located on the outskirts of Valdez at mile .5 of the Richardson Highway. Pink and chum salmon return to this clear water stream each summer to spawn. Occasionally, black bears can be observed feasting on the returning fish. Best viewing seasons: summer and fall.



## COPPER RIVER DELTA

### Hartney Bay

Located at the end of Whitshed Road, approximately 5 miles south of Cordova (not on Forest Service land). From mid-April to mid-May, visitors have the opportunity to view whirling flocks of tens of thousands of shorebirds as they rest and refuel during their long journey northward. The rest of the year brings a wide variety of songbirds and marine mammals such as harbor seals, Steller's sea lions, and sea otters. In late summer, pink and chum salmon return to Hartney Creek to spawn. Best viewing seasons: spring and fall.

### Alaganik Slough

Located at mile 17 of the Copper River Highway. An accessible boardwalk leads visitors to stunning views of both the expansive wetlands of the Copper River Delta and the surrounding mountains. A wide variety of wetland animals including trumpeter swans, moose, brown bear, and shorebirds can be seen in the area. Best viewing seasons: spring and fall.

## VIEWING SAFETY

### KEEP YOUR DISTANCE

If an animal alters its behavior because of your presence, you are too close. Responsible visitors use binoculars and telephoto lenses to observe an animal's normal behavior.

### RESPECT THE ANIMALS

Animals often respond to repeated interference by abandoning homes, nesting sites, and even their young. Remember that we are the visitors.

### NEVER FEED WILDLIFE

Animals that become accustomed to human food become problem animals that need to be removed from the area. Don't leave backpacks, trash, or food where an animal might find it.

### DRIVE SAFELY

When you see wildlife, stop to view it from a safe pullout, not from the roadway. Please do not follow an animal at close distance in your vehicle. Be alert for animals crossing the road, especially at dawn, dusk, and at night.










# Don't Have a Bad Bear Day!



Learn more about bears and bear safety. Pick up a copy of *Bear Facts* or *Living in Harmony with Bears* at any Forest Service office.

The Chugach National Forest is bear country. It is your responsibility to **BE BEAR AWARE!**

-  Watch for signs of bears such as tracks and scat.
-  Make noise to avoid surprising bears in the area.
-  Travel in groups. Groups are noisier and easier for bears to detect and avoid.
-  Never approach a bear. This aggressive behavior on your part forces a bear to react. Harassing bears is illegal and very dangerous.
-  Dogs can increase your risk of a serious bear encounter. Consider leaving them at home, or use a restraint.
-  Store food, trash, and personal hygiene products by hanging them from trees or by using bear-resistant food containers. Never store them in your tent.
-  Cook and store food at least 100 yards from your tent.

## FISHING IN BEAR COUNTRY

### Plan Ahead and Prepare

- Be knowledgeable about bear behavior and the area where you will be fishing.
- Avoid fishing during low light conditions when visibility is decreased.

### Stay Alert While Fishing

- Keep stringers and belongings with you at all times.
- Splashing fish attract bears. If a bear is close enough to notice splashing—stop fishing.
- Do not let a bear get a hooked fish. Cut the line.

### Handle Your Catch Properly

- Bleed your fish into the water immediately.
- Cut carcasses into small pieces that can easily be carried by the current.
- Toss all fish waste into deep, fast-moving water.



**Attention Anglers at the Russian River!** When fishing along the banks of the Russian River or hiking along the Russian River Anglers Trail ALL possessions must be within 3 feet, all retained fish within 12 feet. Do not clean fish on the river beyond a gut and gill. Take fish out whole to clean and dispose of the waste responsibly elsewhere. Pick up a copy of the Russian River Guide at the entrance station for more information.

# Trail Guide



## HIKING HIGHLIGHTS

A variety of trails exist in the Chugach National Forest, from short, easy day hikes to more strenuous, multiday adventures.

**Lost Lake Trail:** This popular 7.5-mile trail leads to the beautiful alpine Lost Lake and neighboring small lakes and ponds that populate the hills to the east. Mount Ascension is aptly named as it towers more than 3,000 feet in the west. A favorite backcountry run takes place here every summer. The area is still snow-covered into late June. The trail is steep and difficult, but the views and open cross-country walking make it worth the effort.

**Heney Ridge Trail:** This local favorite will have you waxing lyrical about its merits. The fact that the trail is a mere 6 miles out of the town of Cordova belies the beauty of Heney Ridge. As you make your way through the old-growth forest with massive moss-covered Sitka spruce, you cross the oldest split log bridge in the area and begin your way through a series of switchbacks. The views from the switchbacks tantalize you as they come in and out of focus. Two and a half miles sees you at the top knoll with great views of Orca Inlet. If you are still feeling strong, continue another mile and a half to the top and reward yourself with a knockout view of the Gulf of Alaska and Kayak Island.

**Trail of Blue Ice:** A walk in the woods that is fun for the whole family is waiting for you in Portage Valley. The wide trail allows for side-by-side strolling and has an accessible, smooth surface of gravel, pavement, or wood decking. The views are spectacular as you walk along the creek and through glacial valleys. You can hike or bike the round-trip from Williwaw Fish Viewing Platform to Moose Flats, or customize your trip with a 3-mile loop that begins and ends at Portage Lake.

The trail is always open, but check-in at the Begich, Boggs Visitor Center for a map of the area and suggestions on customizing your walk. The Visitor Center is open from 9am to 6pm, 7 days a week, Memorial Day to Labor Day with great exhibits, an award-winning movie, and a bookstore.

## Kenai Peninsula Trails

Carter Lake	3.4 miles
Crescent Creek	6.2 miles
Crescent Lake Trail	8.3 miles
Devil's Pass	10 miles
Falls Creek	3.9 miles
Grayling Lake Trail	1.5 miles
Gull Rock	5.7 miles
Iditarod-Bear Lake	7.5 miles
Idit.-Meridian Lakes	8.3 miles
Johnson Pass	23 miles
Lost Lake	7.3 miles
Primrose	7.5 miles
Ptarmigan Creek	3.5 miles
Ptarmigan Lake	3.7 miles
Rainbow Lake	0.3 miles
Resurrection Pass	39 miles
Resurrection River	17 miles
Russian Lakes	21.8 miles
Spencer Glacier	1.3 miles
Victor Creek	2.25 miles

## Girdwood/Portage Trails

Byron Glacier	1.4 miles
Crow Pass	4 miles
Gary Williams Moraine	0.2 miles
Portage Pass	2.5 miles
Spencer Bench	3 miles
Spencer Glacier	3 miles
Trail of Blue Ice	4.5 miles
Upper Winner Creek	9 miles
Williwaw Nature	1.25 miles
Winner Creek	3.5 miles

## Copper River Delta Trails

Alaganik Boardwalk	0.2 miles
Alaganik Slough	0.4 miles
Alice Smith Intertie	7.5 miles
Copper River	0.7 miles
Crater Lake	2.6 miles
Eyak River	2.9 miles
Haystack	0.8 miles
Heney Ridge	4.1 miles
McKinley Lake	2.7 miles
Pipeline Lakes	1.9 miles
Power Creek	4.5 miles
Saddlebag Glacier	3.1 miles
Sheridan Mountain	2.8 miles



# Forest Partners

As the primary nonprofit education partner of the Chugach National Forest, Alaska Geographic connects people to Alaska's magnificent wildlands through experiential education, award-winning books and maps, and by directly supporting the state's parks, forests, and refuges. Over the past 50 years, Alaska Geographic has donated more than \$20 million to help fund educational and interpretive programs throughout Alaska's public lands.

Alaska Geographic operates bookstores across the state, including four locations in the Chugach National Forest: Begich, Boggs Visitor Center in Portage Valley, the Crooked Creek Information Site in Valdez, and the Ranger District Offices in Girdwood and Cordova. Your purchases at these locations directly support the Chugach National Forest—a portion of every sale helps fund educational and interpretive programs throughout the forest.

To find out more, become a member, or browse our wide selection of Alaska books, maps, and films, stop by any Alaska Geographic bookstore or visit our website at [www.alaskageographic.org](http://www.alaskageographic.org)



**Alaska  
Geographic**

Alaska Geographic  
241 North C Street  
Anchorage, AK 99501  
(907) 274-8440 or toll-free at (866) AK-PARKS  
[www.alaskageographic.org](http://www.alaskageographic.org)



### Discover Alaska Collector Series

Pins, patches, hats, and other products featuring these unique Chugach National Forest designs. Exclusively from Alaska Geographic.

## PLANNING YOUR TRIP

Visit the Alaska Geographic bookstores at the Begich, Boggs Visitor Center in Portage Valley, the Crooked Creek Information Site in Valdez, or the Ranger District Offices in Girdwood and Cordova to find books, maps, films, and gifts related to the natural and cultural history of the Chugach National Forest.



### Chugach National Forest *Legacy of Land, Sea and Sky*

In the backyard of Alaska's largest city, the Chugach National Forest is a treasure for all to enjoy. Let author Andromeda Romano-Lax lead you through its riches to discover cultural traditions, abundant wildlife, recreational opportunities, and the Forest Service's 100-year legacy of celebrating these treasures.

Item #12293001 Softcover **\$17.95**  
Item #12293001 Hardcover **\$21.95**



### Chugach National Forest Map

U.S. Forest Service

This overview map of the entire 5.5-million-acre Chugach National Forest indicates land ownership, public-use cabins, campgrounds, hiking trails, and includes information on the area's human and natural history.

Item #35025002 **\$10.00**



### Exploring Alaska's Prince William Sound *A Children's Discovery Book*

Prince William Sound is a world of ice-blue glaciers, sky scraping mountains and massy-grass forests. Dive in and meet the people and creatures that call this special place home. Make your own map of Alaska, track bears in the forest, take a train ride through the wilderness, follow the salmon's life cycle, sail with early explorers and dive with a submarine.

Item #10583 **\$4.95**



### Portage Valley Pin *Discover Alaska Collection*

Attach this gold enamel pin to your lapel and display your support for Portage Valley and the Chugach National Forest. Each pin is approximately 1 x 1-1/2 inches. Exclusively from Alaska Geographic.

Item #56064 **\$5.95**

Also available online at [www.alaskageographic.org](http://www.alaskageographic.org)



## Contact Information

Chugach National Forest  
161 East First Avenue, Door 8  
Anchorage, AK 99501  
(907) 743-9500  
[www.fs.usda.gov/chugach](http://www.fs.usda.gov/chugach)  
Parking is at the east-end  
of the building only.

Cordova Ranger District  
P.O. Box 280  
612 Second Street  
Cordova, AK 99574  
(907) 424-7661

Glacier Ranger District  
P.O. Box 129  
145 Forest Station Road  
Girdwood, AK 99587  
(907) 783-3242

Seward Ranger District  
P.O. Box 390  
334 Fourth Avenue  
Seward, AK 99664  
(907) 224-3374

Alaska Public Lands  
Information Center  
605 W. Fourth Avenue  
Anchorage, AK 99501  
(907) 644-3661  
[www.alaskacenters.gov](http://www.alaskacenters.gov)

## Visitor Centers Summer Only

Begich, Boggs Visitor Center  
800 Portage Lake Loop  
Portage Valley  
(907) 783-2326

Crooked Creek  
Information Site  
Mile 0.5 Richardson Highway  
Valdez  
(907) 835-4680

## Other Contacts in Southcentral Alaska

Chugach State Park  
(907) 269-8400

Kenai National Wildlife Refuge  
(907) 262-7021

Kenai Fjords National Park  
(907) 224-2132

